



## COMPANY PROFILE

# WELCOME TO MONTREAL APPAREL LTD



100% EXPORT ORIENTED GARMENTS  
MANUFACTURER & EXPORTER

# INDEX



SL. NO.	DETAILS	PAGE NO.
<b>1</b>	<b>ABOUT US</b>	<b>3</b>
<b>2</b>	<b>WHO WE ARE</b>	<b>4</b>
<b>3</b>	<b>OUR VALUES</b>	<b>5</b>
<b>4</b>	<b>WHAT WE DO</b>	<b>6</b>
<b>5</b>	<b>WHAT WE DO</b>	<b>7</b>
<b>6</b>	<b>MEN'S WEAR</b>	<b>8</b>
<b>7</b>	<b>WOMEN'S WEAR</b>	<b>9</b>
<b>8</b>	<b>KID'S WEAR KNIT ITEMS</b>	<b>10</b>
<b>9</b>	<b>KID'S WEAR WOVEN ITEMS</b>	<b>11</b>
<b>10</b>	<b>FABRIC CAPACITY</b>	<b>12</b>
<b>11</b>	<b>PRODUCT CAPABILITIES</b>	<b>13</b>
<b>12</b>	<b>OUR FACTORY VIEW</b>	<b>14</b>
<b>13</b>	<b>OUR CUSTOMERS</b>	<b>15</b>
<b>14</b>	<b>MAL ADDRESS</b>	<b>16</b>
<b>15</b>	<b>THANK YOU</b>	<b>17</b>



## ABOUT US

MONTREAL APPAREL LTD. Founded in 2022 where fashion comes alive in every stitch. As a premier ready-made garment manufacturer and an exporter, we transform designs into products. Our skilled cutters, seamstress and packers put in a skills, precision and passion to craft exquisite garments that embody fashion and comfort. Our commitment to quality craftsmanship and ethical practices resonates in every garment we create. We are proudly catering to esteemed brands, retailers and importers and we invite you to witness the essence of elegance and quality at MONTREAL APPAREL LTD.

## WHO WE ARE

100% Export Oriented Garments Manufacturer & Exporter

MONTREAL APPAREL LTD. Is a fast growing apparel sourcing and garments manufacturer company in Bangladesh. Our products are knit items- T-shirt, Polo shirt, Hoodie, Sweat shirt, Jacket, Shorts, Cargo shorts, Trouser, Leggings, Tops, Tank Top etc. Woven items are - All kinds of Shirt- Formal & Casual, Pant- Formal, Chinos & Cargo, Shorts, Jackets. Denim items are- Denim pant, Jacket, shorts, Tops, Tunic & Kids wear are available and many more trendy and cool clothing.



# OUR VALUES



Be An Unmatched  
Apparel Manufacturing  
Solution.



To produce a wide range of  
apparels with exceptional  
price, Innovative designs and  
value addition.

## SAMPLE & CAD SECTION VIEW



## Commitment

We value our commitments for on time  
delivery, quality and sustainability.



## Efficiency

We set high efficiency standard  
to run our core functions to excel.

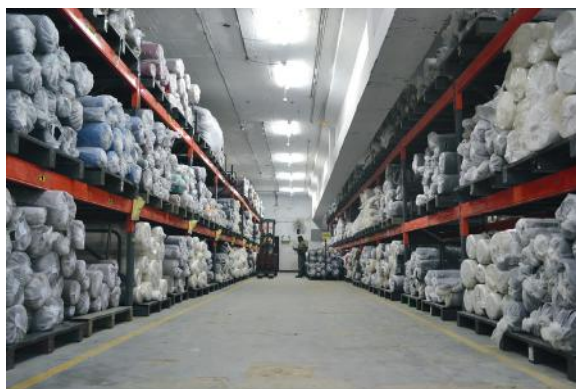


## Compliance

We test our social & technical compliance  
Rigorously & routinely for accountability  
& Transparency.



## FABRIC STORE VIEW



# WHAT WE DO

## CUTTING SECTION VIEW



### MANUFACTURING



We continually enhance our value chain by optimizing processes through effective communication, centralization of activities, and rigorous quality control. This ensures adaptable solutions tailored to individual customer needs, maintaining efficiency from development to delivery.

### DESIGN & DEVELOPMENT



Montreal Apparel Ltd. Boasts a committed merchandising, designing and fabric development team that collaborates closely with customers to deliver high-quality products efficiently.

### PRODUCTION



Montreal Apparel Ltd. Strives for continuous improvement in production and quality to thrive in the highly competitive market. With a monthly production capability of 4,00,000 knit items, 150,000 woven items including Denim. We aim to meet market demands effectively.

## SWEING SECTION VIEW





## QUALITY ASSURING



Montreal Apparel Ltd. Is dedicated to providing high-quality products, ensuring stringent 1.5 AQL final inspection, complemented by detailed in-line inspections and Pre-production meetings for meticulous quality control.

## Lead Time



70 days from fabric approval (imported fabric by sea shipment)  
100 days from fabric / print design or color selection (imported fabric by sea shipment).

## SAMPLE



First sample: 4 to 7 working days,  
Sales sample: 6 to 10 weeks 5 to 10 working days,  
Size set sample: 10 working days (after bulk fabric received).

## FINISHING SECTION VIEW



### FACTORY SPACE:

30,000 Sq / Ft ( Including Roof/Top)

### DETAILS OF THE MACHINERY'S

Name Of The Machine	No. Of The Machine	COUNTRY OF ORIGIN
OVER LOCK	70 Sets	China
PLAIN MACHINE	110 Sets	China
FLAT LOCK (Flat bed)	10 Sets	China
FLAT LOCK (Cylinder bed)	20 Sets	China
BACK TAPE MACHINE	02 Sets	China
RIB CUTTER MACHINE	02 Set	China
BUTTON HOLE MACHINE	04 Set	China
BUTTON STITCH MACHINE	04 Set	China
CUTTING MACHINE	02 Sets	China
IRON WITH STEM BOILER	10 Sets	Bangladesh
FEED OF THE ARM	02 Sets	China
Total	236 Sets	

# MEN'S WEAR





# WOMEN'S WEAR



## KID'S WEAR KNIT ITEMS





## KID'S WEAR WOVEN ITEMS



# FABRIC CAPACITY

## KNIT DIVISION

- JERSEY
- PIQUEE & LACOSTE
- RIB / INTERLOCK
- FLEECE
- TERRY
- CVC
- VISCOSE

## WOVEN DIVISION

- TWILL-TC, CTN WITH ELASTANE
- POPLIN-CTN WITH ELASTANE
- FLANNEL-100% CTN
- DOBBY-CTN WITH ELASTANE
- DENIM-CTN WITH ELASTANE
- CANVAS-100% CTN
- OXFORD-

## WASHING PART

- NORMAL GARMENT WASH
- GARMENT WASH
- SILICON WASH
- ENZYME WASH
- VINTAGE WASH
- OIL WASH
- BURNOUT WASH
- ACID WASH
- STONE WASH
- BLEACH WASH
- OPTIC WASH
- GARAGE WASH
- BRUSH WASH

## DYEING PART

- PIGMENT DYEING
- DIRECT DYEING
- REACTIVE DYEING
- DISCHARGEABLE DYEING
- COOL DYEING
- TIE DYEING  
(SINGLE/ MULTI COLOR)
- DIP DYEING  
(SINGLE / MULTI COLOR)
- SAMBA DYE
- CROSS DYEING
- FOAM DYEING



## PRODUCT CAPABILITIES

CATEGORY	SUB CATEGORY	QUANTITY	DAYES
Knit	T-shirt	4,00,000 pc	Per Month
	Polo Shirt	2,00,000 pc	Per Month
	Sweat shirt	2,00,000 pc	Per Month
	Hoodie	1,00,000 pc	Per Month
	Leggings	2,00,000 pc	Per Month
	Trouser	1,00,000 pc	Per Month
Woven	Shirt	1,50,000 pc	Per Month
	Trouser/Pant	1,00,000 pc	Per Month
	Cargo/Shorts	1,00,000 pc	Per Month
	Denim Pant	1,00,000 pc	Per Month

## CERTIFICATIONS



## OUR FACTORY VIEW

### MONTREAL APPAREL LTD



# CUSTOMERS

gorfactory  
WROLY



SADECO



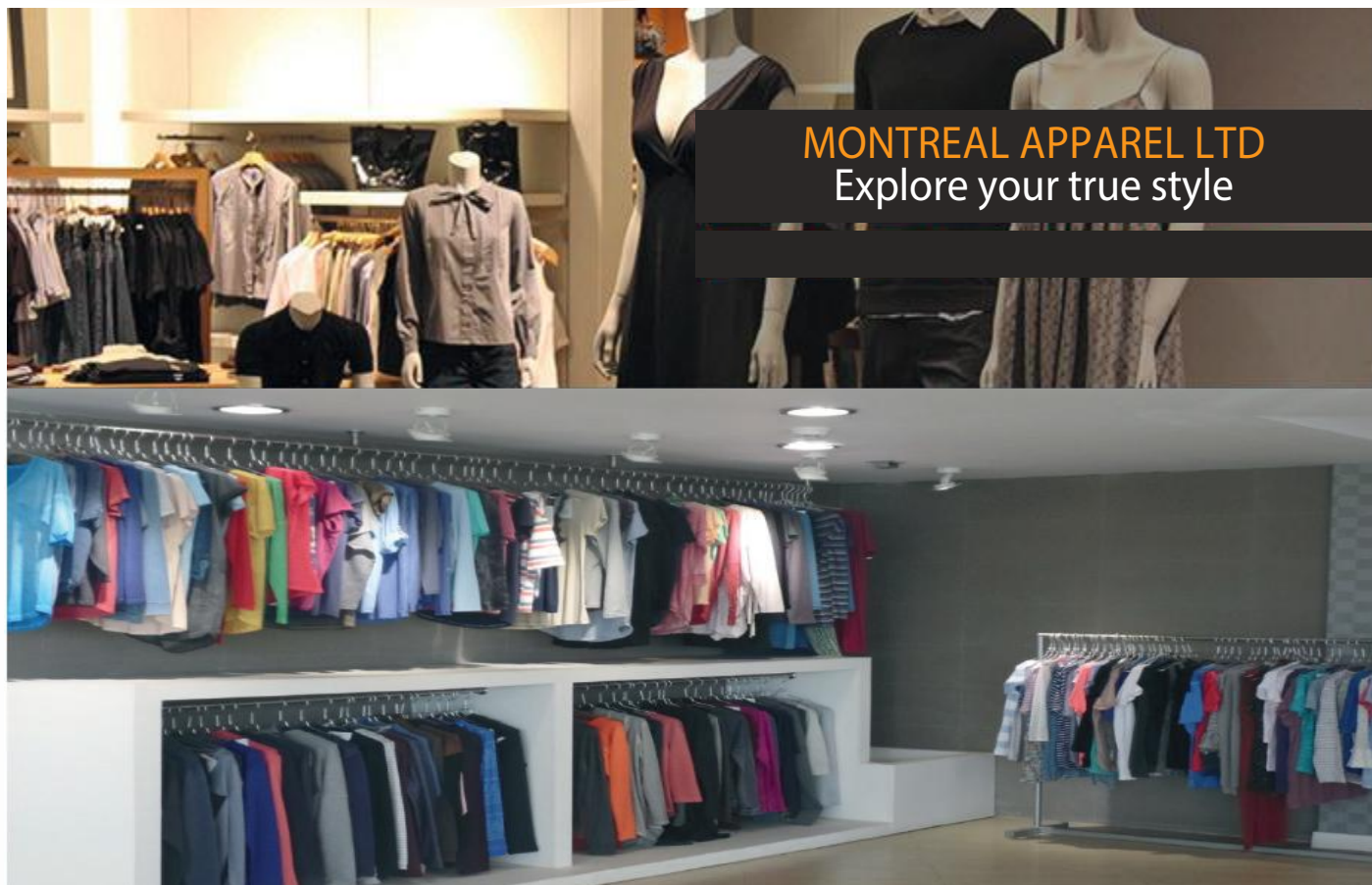
- AVERAGE ANNUAL TURNOVER \$10,000,000



# MONTREAL APPAREL LTD

100% Export Oriented Garments Manufacturer & Exporter

**MONTREAL APPAREL LTD**  
Explore your true style



**ISO 45001:2018**  
(Occupational Health & Safety Management System)

❖ **PHONE NUMBER**

+88 01911-386878  
+88 02 8414044  
+1437 973 4764

❖ **E-MAIL**

info@mcl-bd.com  
zahirul@mcl-bd.com  
shaheen@mcl-bd.com  
rafi@mcl-bd.com



**ISO 9001:2015**  
(Quality Management System)

❖ **OFFICE**

House. 158 (1st Floor), Road. 01 (East)  
Baridhara D.O.H.S  
Dhaka - 1206. Bangladesh.

❖ **FACTORY**

Montreal Apparel Ltd  
216, Shorifpur, Harican  
Gazipur - 1700 Dhaka, Bangladesh.



**ISO 14001:2015**  
(Environmental Management System)



[www.mcl-bd.com](http://www.mcl-bd.com)



# THANK YOU